

imits

Innovation and Prices

2012-1



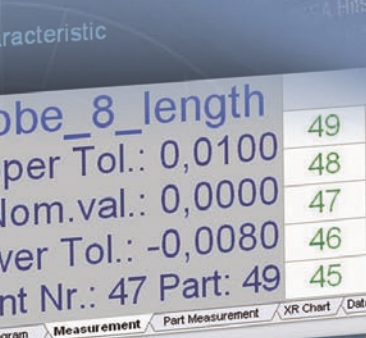
TECHNOLOGY

**VALID UNTIL 30.06.2012
ALL PRICES EXCLUDE VAT**

VERSION 35 - EN-2



WWW.TESABS.CH



High capacity, effective and ergonomic stations for component inspection thanks to TESA electronic probes equipped with a USB connection coupled with DATA-Direct and STAT-Express.

- Direct connection to the PC
- Up to ± 5 mm measuring span
- Statistics • Archiving

Every TESA probe with analogue output can be converted into a USB probe thanks to the adapters 03260500 or 03260501.



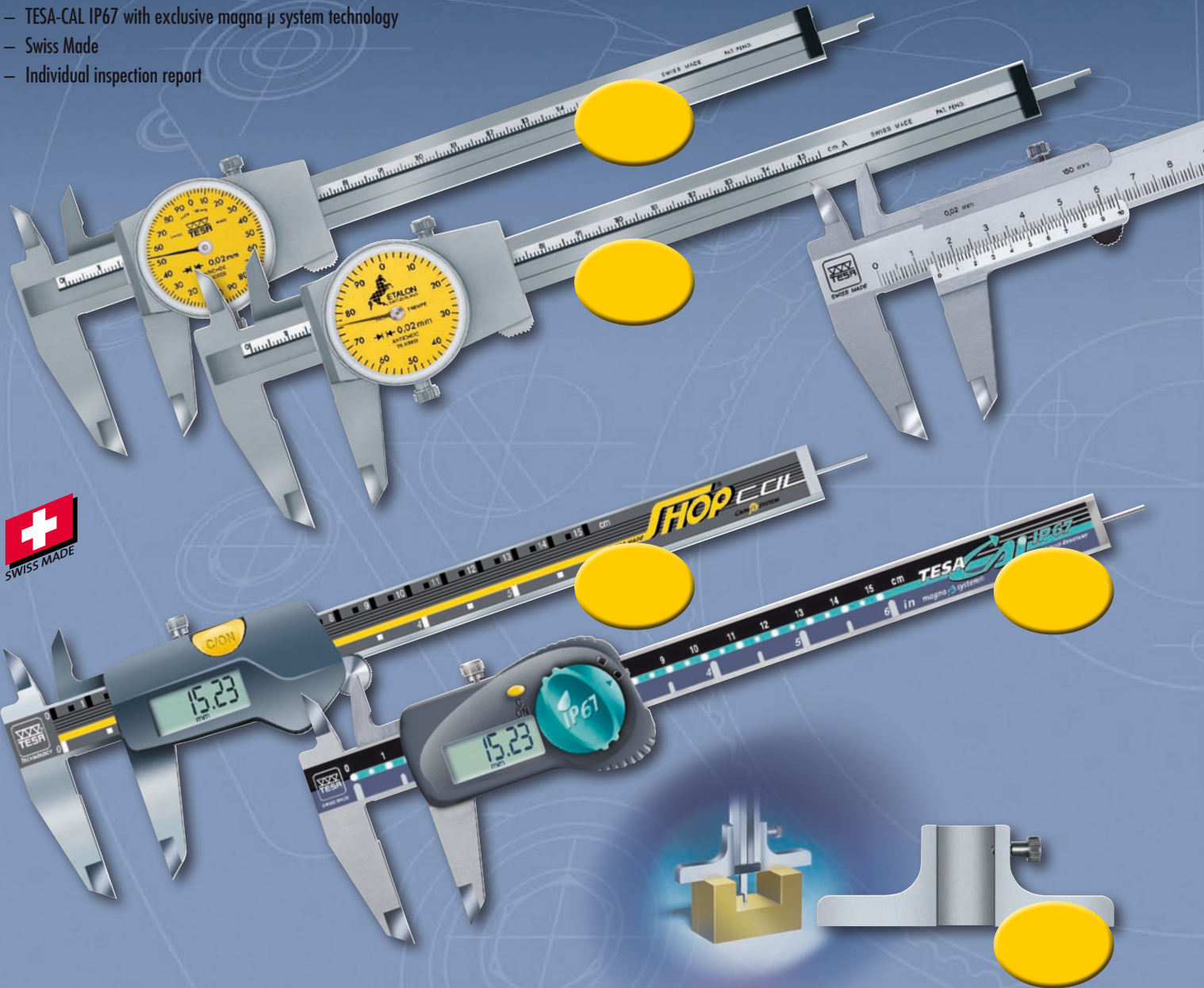
Order number	Description	Measuring range, mm	Max. perm. error, μm	Repeatability, μm	List price	Special price
03230200	GT21 USB Axial probe	± 2	0,4 + 0,6 • L	< 0,1		
03230204	GT16 USB Axial probe	± 5	0,8 + 0,6 • L	< 0,24		
03260500	USB adapter for axial probe ± 2 mm					
03260501	USB adapter for axial probe ± 5 mm					
04981001	DATA-Direct Software					
04981002	STAT-Express Software					



HITS

TESA CALIPERS

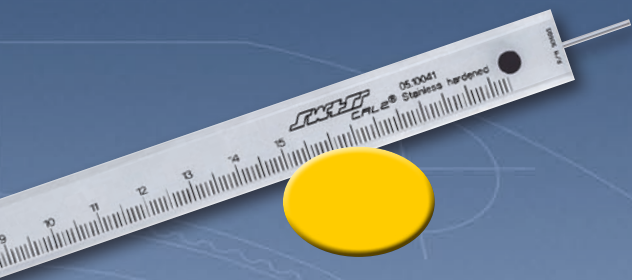
- TESA-CAL IP67 with exclusive magna μ system technology
- Swiss Made
- Individual inspection report



Order number	Description	Measuring range		Thumb roller	List price	Special price
		mm	in			
00510041	Model with vernier, 0,02 mm	0 ÷ 150	–	–		
00510047	Model with vernier, 0,05 mm	0 ÷ 150	–	–		
00510008	CCMA dial caliper to 0,02 mm, 2 mm per revolution	0 ÷ 150	–	–		
00510045	CCMA dial caliper to 0,02 mm, 2 mm per revolution	0 ÷ 200	–	•		
075115821	ETALON 125 dial caliper to 0,02 mm, 1 mm per revolution	0 ÷ 150	–	–		
00530091	SHOP-CAL IP40, 0,01 mm	0 ÷ 150	0 ÷ 6	•		
00530092	SHOP-CAL IP40, 0,01 mm	0 ÷ 200	0 ÷ 8	•		
00530093	SHOP-CAL IP40, 0,01 mm	0 ÷ 300	0 ÷ 12	•		
00530300	TESA-CAL IP67, 0,01 mm	0 ÷ 150	0 ÷ 6	–		
00530302	TESA-CAL IP67, 0,01 mm	0 ÷ 200	0 ÷ 8	•		
00530303	TESA-CAL IP67, 0,01 mm	0 ÷ 300	0 ÷ 12	•		
00560013	Depth foot for model 150 mm					

TESA MICROMASTER

- 30 mm measuring span
- SCS calibration certificate
- Protected against the penetration of liquids to IP54



Order number	Description	Measuring range, mm	in	Max. perm. error μm	List price	Special price
06030020	MICROMASTER IP54	0 ÷ 30	0 ÷ 1.2	4		
06030021	MICROMASTER IP54	25 ÷ 50	1 ÷ 2	4		
06030022	MICROMASTER IP54	50 ÷ 75	2 ÷ 3	5		
06030023	MICROMASTER IP54	75 ÷ 100	3 ÷ 4	5		

ETALON ANALOGUE DIAL GAUGES TESA DIGICO ELECTRONIC INDICATORS

- Excellent Price/Performance ratio
- TESA DIGICO with sizes 100% DIN 878 compliant
- TESA DIGICO 705 for bore gauges

TESAST AND INTERAPID DIAL TEST INDICATORS

- Short or long measuring travel
- Fine construction, jewelled movement, ball bearings
- Reliable and robust



Order number	Description	Measuring range, mm	Scale interval, mm	List price	Special price
01810005	TESAST, Ø 28	0,8	0,01		
01810006	TESAST, Ø 38	0,8	0,01		
01810007	TESAST, Ø 28	0,5	0,01		
01810009	TESAST, Ø 28	0,2	0,002		
01810013	TESAST lateral, Ø 28	0,2	0,002		
01639007	UJ15 measuring stand				
074111366	INTERAPID 312, Ø 37,5	1,6	0,01		
074111367	INTERAPID 312, Ø 30	1,6	0,01		
074111368	INTERAPID 312, Ø 37,5	0,4	0,002		
074111369	INTERAPID 312, Ø 30	0,4	0,002		

Order number	Description	Measuring range, mm	Resolution, mm	List price	Special price
01419048	Dial gauge, Ø 58	10	0,01		
01419049	Dial gauge, Ø 58	30	0,01		
01930230	DIGICO 205	12,5	0,01		
01930231	DIGICO 305	12,5	0,001		
01930241	DIGICO 410	25	0,01		
01930251	DIGICO 510	25	0,001		
01930256	DIGICO 605	12,5	0,001		
01930258	DIGICO 705	12,5	0,001		

TESA INTERNAL MICROMETERS



TESA IMICRO WITH ANALOGUE INDICATION

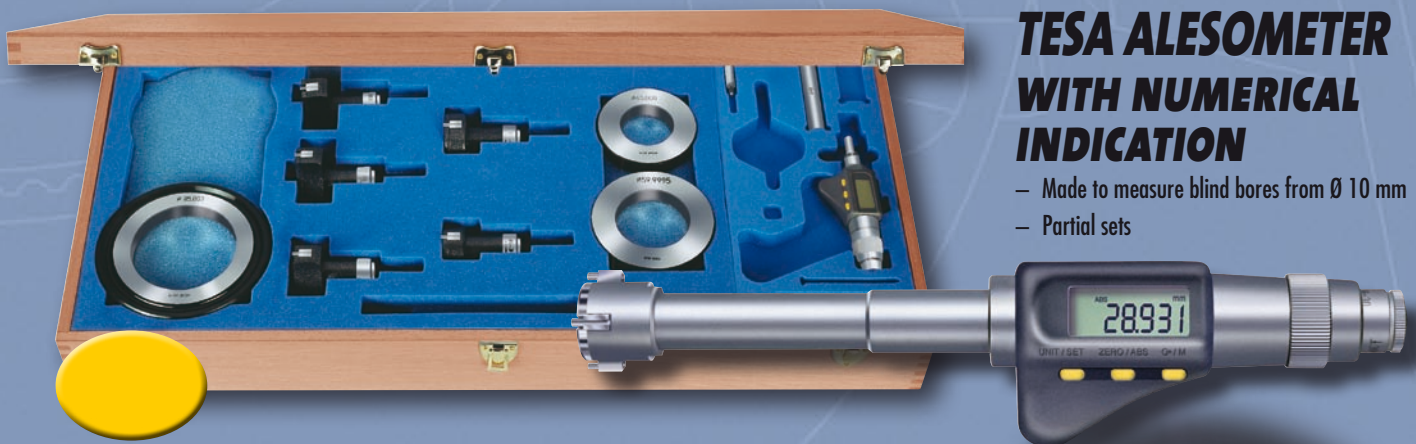
- Self-centering and self-aligning
- Conform to the ABBE principle
- Exceptional reliability and durability
- Full sets



Order number	Description	Measuring range, mm	List price	Special price
00813409	TESA IMICRO, 4 single micrometers	3,5 ÷ 6,5		
00810000	TESA IMICRO, 3 single micrometers	6 ÷ 12		
00810800	TESA IMICRO, 3 single micrometers	11 ÷ 20		
00811500	TESA IMICRO, 4 single micrometers	20 ÷ 40		
00812300	TESA IMICRO, 6 single micrometers	40 ÷ 100		

TESA ALESOMETER WITH NUMERICAL INDICATION

- Made to measure blind bores from Ø 10 mm
- Partial sets



Order number	Description	Measuring range, mm	List price	Special price
06230100	TESA ALESOMETER	6 ÷ 10		
06230110	TESA ALESOMETER	10 ÷ 20		
06230111	TESA ALESOMETER	20 ÷ 40		
06230112	TESA ALESOMETER	40 ÷ 100		



TESA HITE

EXTENSIVE CHOICE AND REMARKABLE PERFORMANCE



Order number	Motorised version	Description	Measuring span mm / in	Application range with standard or S07001622 accessory – mm / in
00730047	–	TESA-HITE Magna 400	415 / 16	0÷ 570 / 0÷ 795 – 0÷22 / 0÷31
00730059	–	TESA-HITE Magna 700	715 / 28	0÷ 870 / 0÷1095 – 0÷34 / 0÷43
00730043	–	TESA-HITE 400	415 / 16	0÷ 570 / 0÷ 795 – 0÷22 / 0÷31
00730044	–	TESA-HITE 700	715 / 28	0÷ 870 / 0÷1095 – 0÷34 / 0÷43
00730045	•	TESA-HITE plus M 400	405 / 16	0÷ 560 / 0÷ 785 – 0÷22 / 0÷31
00730046	•	TESA-HITE plus M 700	705 / 27	0÷ 860 / 0÷1085 – 0÷33 / 0÷42
00730063	•	MICRO-HITE plus M 350	365 / 14	0÷ 520 / 0÷ 745 – 0÷20 / 0÷29
00730064	•	MICRO-HITE plus M 600	615 / 24	0÷ 770 / 0÷ 995 – 0÷30 / 0÷39
00730065	•	MICRO-HITE plus M 900	920 / 36	0÷1075 / 0÷1300 – 0÷42 / 0÷51
00730033	–	MICRO-HITE 350	365 / 14	0÷ 520 / 0÷ 745 – 0÷20 / 0÷29
00730034	–	MICRO-HITE 600	615 / 24	0÷ 770 / 0÷ 995 – 0÷30 / 0÷39
00730035	–	MICRO-HITE 900	920 / 36	0÷1075 / 0÷1300 – 0÷42 / 0÷51
00760163	–	Power Panel for TESA Micro-Hite		
00760220	–	Power Panel for TESA Micro-Hite plus M + Printer		
00760173	–	Small accessory set		

NEW

DRIVE PULLEY

HITS

TESA TECHNOLOGY



MPE, $\mu\text{m} / \text{in}$ L in m / L in in	Repeatability (2 σ) $\mu\text{m} / \text{in}$	Frontal, mechanical $\mu\text{m} / \text{in}$	List price	Special price
8 / 0.0003	3 / 0.00015	–		
8 / 0.0003	3 / 0.00015	–		
$2,5 + 4 \cdot L / 0.0001 + 0.000004 \cdot L$	2 / 0.0001	9 / 0.00035		
$2,5 + 4 \cdot L / 0.0001 + 0.000004 \cdot L$	2 / 0.0001	13 / 0.0005		
$2 + 3 \cdot L / 0.0001 + 0.000003 \cdot L$	1 / 0.00005	8 / 0.00031		
$2 + 3 \cdot L / 0.0001 + 0.000003 \cdot L$	1 / 0.00005	12 / 0.00047		
$1,9 + 1,5 \cdot L / 0.0001 + 0.0000015 \cdot L$	0,5 / 0.00005	5 / 0.0002		
$1,9 + 1,5 \cdot L / 0.0001 + 0.0000015 \cdot L$	0,5 / 0.00005	7 / 0.00028		
$1,9 + 1,5 \cdot L / 0.0001 + 0.0000015 \cdot L$	0,5 / 0.00005	9 / 0.00035		
$2 + 3 \cdot L / 0.0001 + 0.000003 \cdot L$	2 / 0.0001	13 / 0.0005		
$2 + 3 \cdot L / 0.0001 + 0.000003 \cdot L$	2 / 0.0001	7 / 0.00028		
$2 + 3 \cdot L / 0.0001 + 0.000003 \cdot L$	2 / 0.0001	9 / 0.00043		

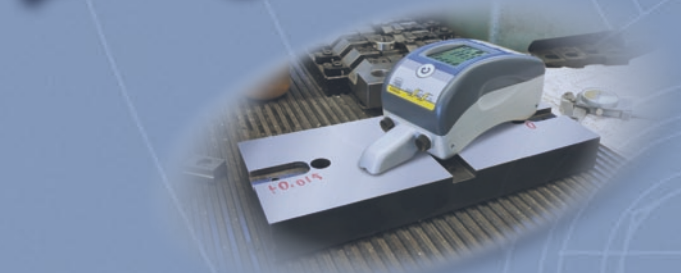


Every TESA height gauge is delivered with an SCS calibration certificate produced in our measurement laboratory under controlled temperature at $20^{\circ}\text{C} \pm 0,1^{\circ}\text{C}$.

TESA RUGOSURF 20

New robust roughness gauge designed for any shop floor close to the production area

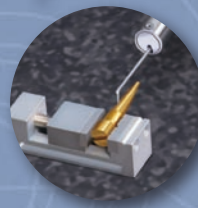
- Small size / Robust / Easy-to-use – X-Axis 16 mm, Z-Axis 400 µm
- 15 Roughness parameters with tolerances – Wide choice of accessories
- Portable printer or USB connection to the PC – Built-in memory



TESA RUGOSURF 90G

Versatile and compact roughness gauge for high-precision measurements on the shop floor as in the metrology lab

- Measuring spans: X = 50 mm, Z = 1000 µm
- Roughness parameters according to ISO / JIS / PrEN / ISO / DIN / DB / ASME international standards
- TFT graphical, tactile and coloured display screen, 3,5"
- Optional kit for measuring any profile up to 2 mm



WWW.TESABS.CH

Order number	Description	List price	Special price
06930013	TESA Rugosurf 20		

Order number	Description	List price	Special price
06930012	TESA Rugosurf 90G		

All modification rights reserved – 10012.064.1110 – Version 35